

RESMED

Mirage Activa™ LT

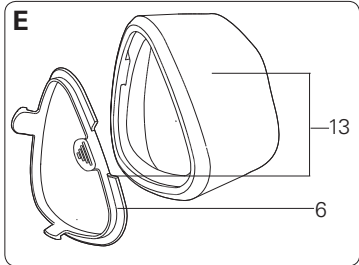
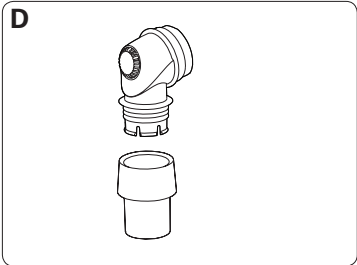
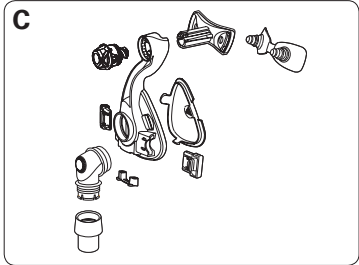
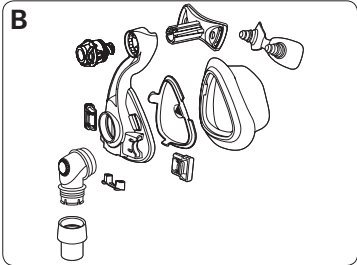
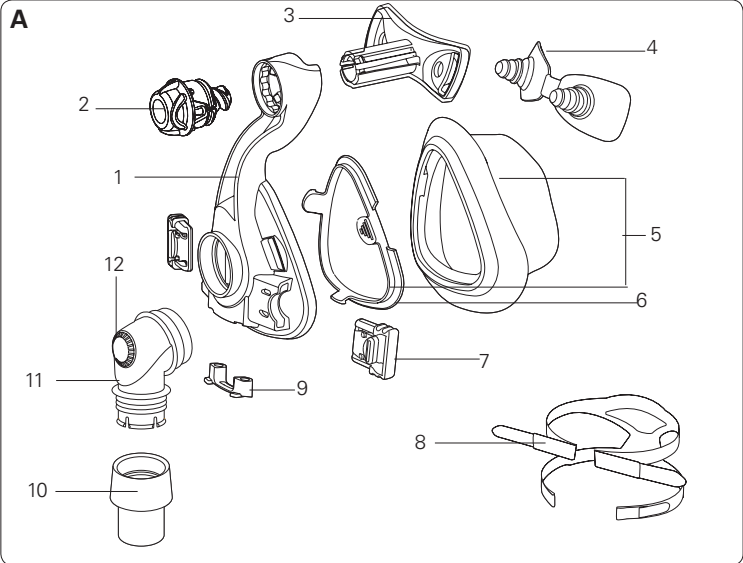
NASAL MASK

User Guide

English



Mirage Activa LT



Mask components / Composants du masque / Piezas de la mascarilla / Componentes da máscara

Item / Article / Artículo / Item	Description / Description / Descripción / Descrição	Part number / Code produit / Número de parte / Código do produto
1	Mask frame / Entourage rigide / Armazón de la mascarilla / Armação da máscara	60180 (St) 60193 (S)
2	Dial / Molette de réglage / Disco / Botão giratório	61289
3	Forehead support / Support frontal / Apoyo para la frente / Suporte para a testa	16393
4	Forehead support pad / Tampon frontal / Almohadilla del apoyo para la frente / Almofada do suporte para a testa	60123 (1) 60124 (10)
5	Activa LT Cushion & clip / Bulle et clip / Almohadilla y broche / Almofada e presilha	60198 (S) 60177 (M) 60178 (L) 60179 (LW)
6	Cushion clip / Clip de la bulle / Broche de la almohadilla / Presilha da almofada	60176 (St) 60197 (S)
7	Headgear clip / Clip d'attache du harnais / Broche del arnés / Presilha do arnés	16569 (2) 16734 (10)
8	Headgear / Harnais / Arnés / Arnês	16118 (S) 16117 (M) 16119 (L)
9	Ports cap / Bouchon d'entrées / Tapón de los puertos / Tampa das portas	16570 (2) 16571 (10)
10	Swivel / Pièce pivotante / Pieza giratoria / Peça giratória	16565
11	Elbow / Coude / Codo / Cotovelo	16387
12	Vent / Orifice de ventilation / Ventilación / Respiradouro	—
13	SoftGel Cushion & clip / Bulle et clip / Almohadilla y broche / Almofada e presilha	61631 (S) 61632 (M) 61633 (L) 61634 (LW)

Item / Article / Artículo / Item	Description / Description / Descripción / Descrição	Part number / Code produit / Número de parte / Código do produto
A	Complete system / Système complet / Sistema completo / Sistema completo	60182 (S) 60148 (M) 60149 (L) 60150 (LW)
B	Frame system / Entourage complet / Sistema de armazón / Sistema da armação	60195 (S) 60172 (M) 60173 (L) 60174 (LW)
C	Frame assembly / Ensemble entourage / Conjunto del armazón / Conjunto da armação	60175 (St) 60196 (S)
D	Elbow assembly / Ensemble coude / Conjunto del codo / Conjunto do cotovelo	16399
E	SoftGel Cushion & clip / Bulle et clip / Almohadilla y broche / Almofada e presilha	61631 (S) 61632 (M) 61633 (L) 61634 (LW)
Also available / Également disponible / También está disponible / Também disponível		
A + E	ConvertAble Pack	61604 (S) 61609 (M) 61615 (L) 61620 (LW)

S Small / Petit / Pequeña / Pequeno(a)

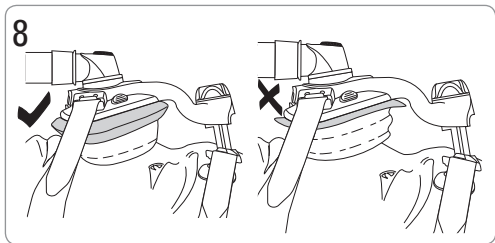
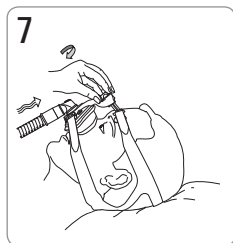
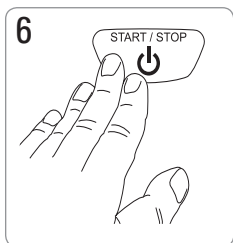
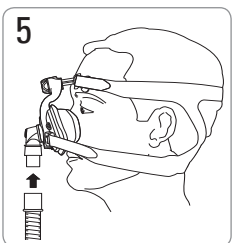
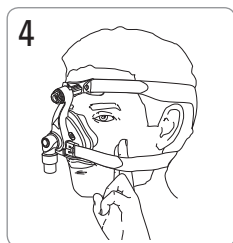
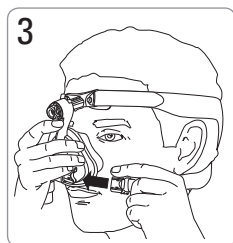
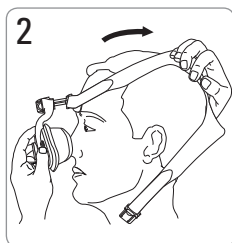
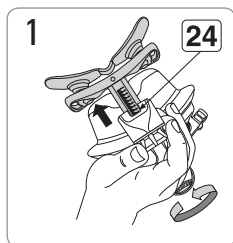
M Medium / Moyen / Mediana / Médio(a)

St Standard / Standard / Estándar / Standard

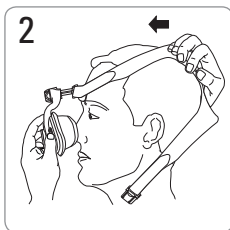
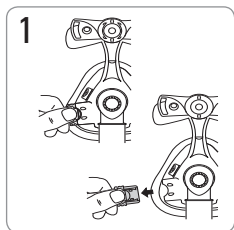
L Large / Grand / Grande / Grande

LW Large Wide / Grand et large / Grande-Largo (GL) / Grande-Ancho (GA)

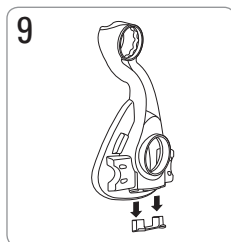
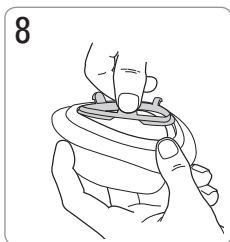
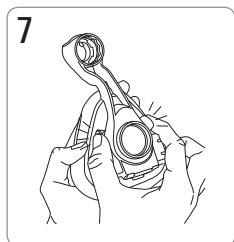
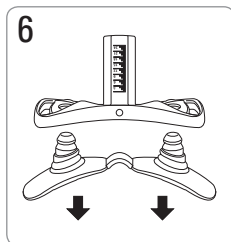
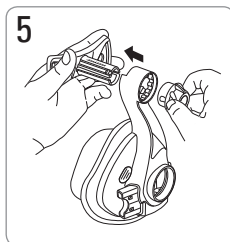
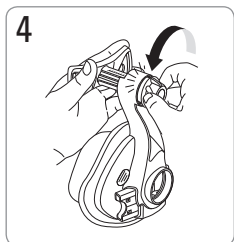
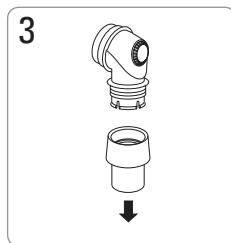
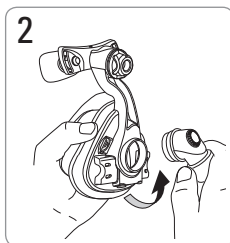
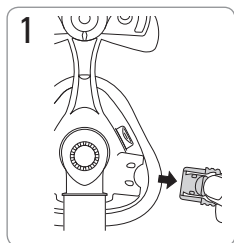
Fitting / Mise en place / Colocación / Colocação



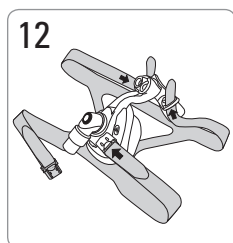
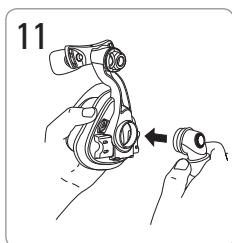
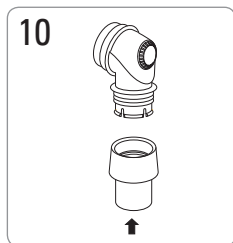
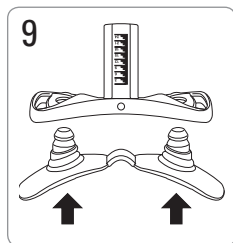
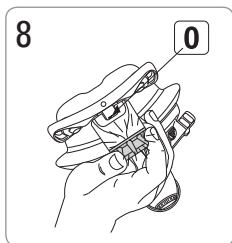
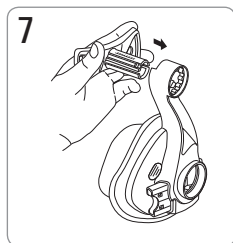
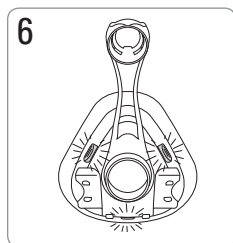
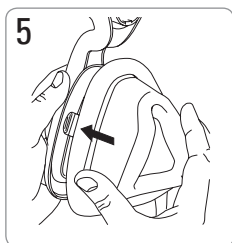
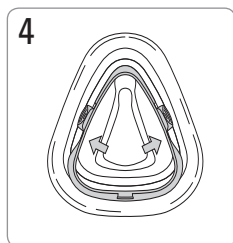
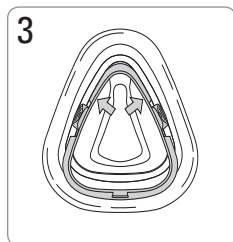
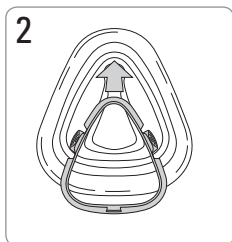
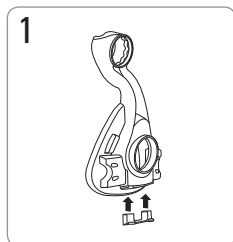
Removal / Enlèvement du masque / Para quitarse la mascarilla / Remoção



Disassembly / Démontage / Desmontaje / Desmontagem



Reassembly / Remontage / Montaje / Remontagem



Mirage Activa™ LT

Rx Only

NASAL MASK

Thank you for choosing the Mirage Activa™ LT. The Mirage Activa LT is the first in ResMed's ConvertAble™ Series—offering a choice of two high performance cushions (Mirage Activa LT and Mirage SoftGel) on the one durable frame. For further information, refer to the ConvertAble Series section in this User Guide.

Intended Use

The Mirage Activa LT channels airflow noninvasively to a patient from a positive airway pressure device such as a continuous positive airway pressure (CPAP) or bilevel system.

The Mirage Activa LT is:

- to be used by adult patients (>66 lb/30 kg) for whom positive airway pressure has been prescribed
- intended for single-patient re-use in the home and multipatient re-use in the hospital/institutional environment.

Using your mask

When using your mask with ResMed CPAP or bilevel devices that have mask setting options, refer to the Technical specifications section in this user guide for mask selection options.

For a full list of compatible devices for this mask, see the Mask/Device Compatibility List on www.resmed.com on the **Products** page under **Service & Support**. If you do not have internet access, please contact your ResMed representative.



WARNING

- The vent holes must be kept clear.
- Follow all precautions when using supplemental oxygen.
- Oxygen flow must be turned off when the flow generator is not operating, so that unused oxygen does not accumulate within the flow generator enclosure and create a risk of fire.
- At a fixed flow rate of supplemental oxygen flow, the inhaled oxygen concentration varies, depending on the pressure settings, patient breathing pattern, mask, point of application and leak rate.

- The technical specifications of the mask are provided for your clinician to check that they are compatible with the flow generator. If used outside specification or if used with incompatible devices, the seal and comfort of the mask may not be effective, optimum therapy may not be achieved, and leak, or variation in the rate of leak, may affect the flow generator function.
- Discontinue using the mask if you have ANY adverse reaction to the use of the mask, and consult your physician or sleep therapist.
- Using a mask may cause tooth, gum or jaw soreness or aggravate an existing dental condition. If symptoms occur, consult your physician or dentist.
- As with all masks, some rebreathing may occur at low CPAP pressures.
- Refer to your CPAP or bilevel device manual for details on settings and operational information.
- Remove all packaging before using the mask.

Cleaning your mask in the home

Your mask and headgear should only be handwashed by gently rubbing in warm (approximately 86°F/30°C) water using mild soap. All components should be rinsed well with drinking quality water and allowed to air dry out of direct sunlight.

Daily/After each use:

- To optimize the mask seal, facial oils should be removed from the cushion after use.
- Handwash the separated mask components (excluding headgear).
- If the vent requires cleaning use a soft bristle brush.

Weekly:

- Handwash the headgear. It may be washed without being disassembled.



WARNING

- Do not use aromatic-based solutions or scented oils (eg, eucalyptus or essential oils), bleach, alcohol or products that smell strongly (eg, citrus) to clean any of the mask components. Residual vapors from these solutions can be inhaled if not rinsed thoroughly. They may also damage the mask, causing cracks.



CAUTION

- If any visible deterioration of a mask component is apparent (cracking, crazing, tears etc.), the mask component should be discarded and replaced.
- Avoid connecting flexible PVC products (eg, PVC tubing) directly to any part of this mask. Flexible PVC contains elements that can be detrimental to the materials of the mask, and may cause the components to crack or break.

Reprocessing the Mask between Patients

This mask should be reprocessed when used between patients. Cleaning, disinfection and sterilization instructions are available from the ResMed website, www.resmed.com/masks/sterilization/americas. If you do not have internet access, please contact your ResMed representative.

Troubleshooting

Possible reason

Solution

Mask is uncomfortable

Headgear straps are too tight.

Adjust the straps evenly. The forehead support “anchors” your mask and should sit firmly on your forehead.

Cushion incorrectly inflated.

With the air turned off, adjust the straps so that you can insert two fingers between your cheek and the lower headgear strap.

Mask is too noisy

Cushion clip is not inserted correctly.

Check that the cushion clip is correctly inserted into the cushion, and that the cushion is correctly clipped to the frame.

Ports cap or elbow incorrectly inserted.

Check the the ports cap and elbow are correctly inserted.

Vents are blocked or partially blocked.

Clean vents according to instructions in “Cleaning the Mask at Home”.

Air leaking around the face

Mask not positioned correctly.

Reposition the mask upon the face.

Air leaking around the bridge of the nose.

Wind the dial in.

Air leaking around the top of the lip.

Wind the dial out.

The mask does not fit properly

Cushion could be the wrong size.	Talk to your clinician.
Mask is incorrectly assembled.	Reassemble the mask according to the instructions in "Reassembly".
Cushion may be dirty.	Clean cushion according to instructions in "Cleaning the Mask at Home".

Cannot insert forehead support into mask frame

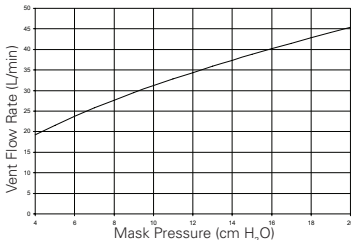
When assembling the mask, you have inserted the dial into the frame before the forehead support.	Push dial base onto a hard surface until the dial comes out of the frame.
--	---

Technical Specifications

The mask system does not contain latex, PVC or DEHP materials.

Pressure–Flow Curve

The mask contains passive venting to protect against rebreathing. As a result of manufacturing variations, the vent flow rate may vary.



Pressure (cm H ₂ O)	Flow (L/min)
4	19
8	28
12	34
16	40
20	45

Dead Space Information

The dead space of the mask varies according to cushion size. It is 185 mL for the Medium size.

Therapy Pressure

4 to 20 cm H₂O

Environmental Conditions

Operating temperature: +41°F to 104°F (+5°C to +40°C)
 Operating humidity: up to 95% non-condensing
 Storage and transport temperature: -4°F to 140°F (-20°C to +60°C)
 Storage and transport humidity: up to 95% non-condensing

Resistance

Drop in pressure measured (nominal)
 at 50 L/min: 0.1 cm H₂O
 at 100 L/min: 0.7 cm H₂O

Gross dimensions

S: 5.55"/141mm (H) x 3.58"/91mm (W) x 4.21"/107mm (D)
 M, L, LW: 6.06"/154 mm (H) x 3.74"/95mm (W) x 4.6"/117 mm (D)
 Mask fully assembled – no headgear.

Mask setting options

Select 'Activa' (if available) otherwise select 'Standard' as the mask option.

The manufacturer reserves the right to change these specifications without notice.












Storage

Ensure that the mask is thoroughly clean and dry before storing it for any length of time. Store the mask in a cool dry place out of direct sunlight.

Disposal

The mask does not contain any hazardous substances and may be disposed of with your normal household refuse.

Symbols

 Caution, consult accompanying documents;  Lot number;  Part number;  Temperature limitation;  Humidity limitation;  Does not contain latex;  Manufacturer;  Indicates a Warning or Caution and alerts you to a possible injury or explains special measures for the safe and effective use of the device.  Keep away from rain;  This way up;  Fragile, handle with care.

Limited warranty

ResMed Ltd (hereafter 'ResMed') warrants that your ResMed mask system (including mask frame, cushion, headgear and tubing) shall be free from defects in material and workmanship from the date of purchase for the period of 90 days or in the case of disposable masks the maximum use period.

This warranty is only available to the initial consumer. It is not transferable. If the product fails under conditions of normal use, ResMed will repair or replace, at its option, the defective product or any of its components.

This limited warranty does not cover: a) any damage caused as a result of improper use, abuse, modification or alteration of the product; b) repairs carried out by any service organization that has not been expressly authorized by ResMed to perform such repairs; and c) any damage or contamination due to cigarette, pipe, cigar or other smoke.

Warranty is void on product sold, or resold, outside the region of original purchase.

Warranty claims on defective product must be made by the initial consumer at the point of purchase.

This warranty replaces all other expressed or implied warranties, including any implied warranty of merchantability or fitness for a particular purpose. Some regions or states do not allow limitations on how long an implied warranty lasts, so the above limitation may not apply to you.

ResMed shall not be responsible for any incidental or consequential damages claimed to have resulted from the sale, installation or use of any ResMed product. Some regions or states do not allow the exclusion or limitation of incidental or consequential damages, so the above limitation may not apply to you.

This warranty gives you specific legal rights, and you may also have other rights which vary from region to region. For further information on your warranty rights, contact your local ResMed dealer or ResMed office.

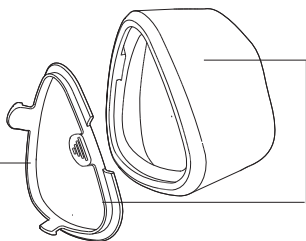
Mirage™ SoftGel

NASAL MASK / MASQUE NASAL / MASCARILLA NASAL /
MÁSCARA NASAL

User information

English • Français • Español • Português

Cushion clip / Clip
de la bulle / Broche
de la almohadilla /
Presilha da
almofada
60176 (St)
60197 (S)



Cushion & clip / Bulle et
clip / Almohadilla y broche /
Almofada e presilha
61631 (S)
61632 (M)
61633 (L)
61634 (LW)

English

Please read this information in conjunction with your Mirage Activa™ LT User Guide when changing your Mirage Activa LT cushion to the Mirage SoftGel cushion.

Intended use

The Mirage SoftGel channels airflow noninvasively to a patient from a positive airway pressure device such as a continuous positive airway pressure (CPAP) or bilevel system.

The Mirage SoftGel is:

- to be used by adult patients (> 66 lb/30 kg) for whom positive airway pressure has been prescribed
- intended for single-patient re-use in the home environment and multipatient re-use in the hospital/institutional environment.

Troubleshooting

Problem/possible cause	Solution
------------------------	----------

Mask is uncomfortable

Headgear straps are too tight.	Adjust straps evenly. The forehead support 'anchors' your mask and should sit firmly on your forehead.
Fit is too tight.	Wind out dial.

Technical specifications

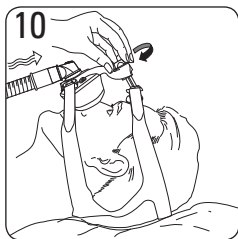
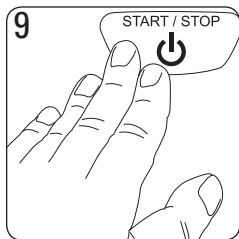
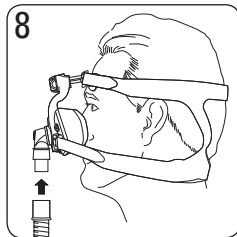
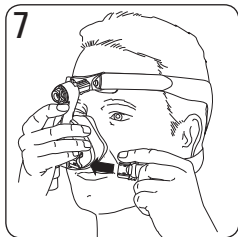
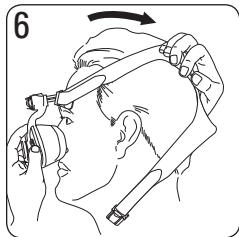
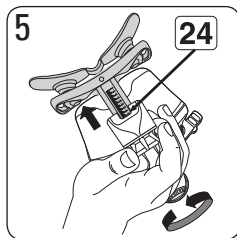
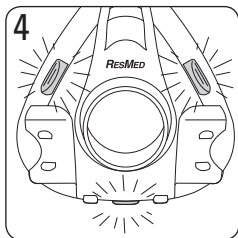
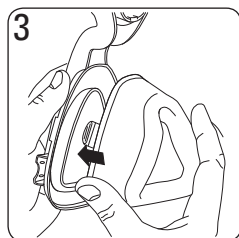
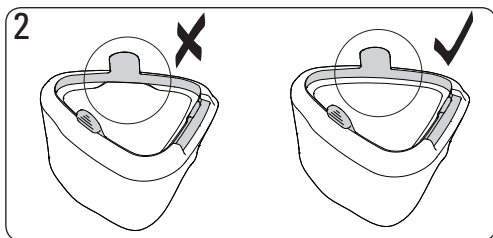
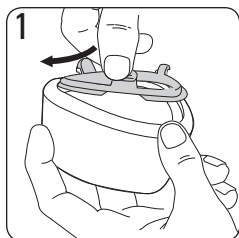
Dead space information	Physical dead space is the empty volume of the mask to the end of the swivel. Using the large cushions it is 145 mL.
-------------------------------	--

Resistance	Drop in pressure measured (nominal) at 50 L/min: 0.3 cm H ₂ O at 100 L/min: 0.9 cm H ₂ O
-------------------	--

Gross dimensions	Mask fully assembled - no headgear
Large:	6.10" (H) x 3.58" (W) x 4.65" (D) (155 mm (H) x 91 mm (W) x 118 mm (D))

Mask setting options	Select 'ACTIVA' (if available), otherwise select 'STANDARD' as the mask option.
-----------------------------	---

Fitting and assembly / Ajustement et montage / Colocación y montaje / Encaixe e montagem



Manufacturer:

ResMed Ltd 1 Elizabeth Macarthur Drive Bella Vista NSW 2153 Australia.

Distributed by:

ResMed Corp 9001 Spectrum Center Boulevard San Diego CA 92123 USA.

ResMed (UK) Ltd 96 Milton Park Abingdon Oxfordshire OX14 4RY UK.

See www.resmed.com for other ResMed locations worldwide.

Mirage Activa LT Nasal Mask

Protected by patents: AU 2001267133, AU 2002301370, AU 710733, AU 741003, AU 766623, AU 775051, AU 777033, AU 785376, CA 2261790, CA 2470671, DE 20122844.0, EP 0956069, EP 1187647, EP 1187649, EP 1187650, EP 1314445, EP 1334742, EP 1479406, EP 1582230, EP 1621225, EP 1640034, HK 1057714, HK 1071083, JP 3686609, JP 3802872, JP 4031422, JP 4354664, NZ 513052, NZ 526165, NZ 526166, NZ 526167, NZ 526168, NZ 542849, NZ 543939, US 6112746, US 6119693, US 6357441, US 6374826, US 6412487, US 6439230, US 6463931, US 6532961, US 6557556, US 6581594, US 6581602, US 6634358, US 6691708, US 6772760, US 6796308, US 6823865, US 6823869, US 6860269, US 6871649, US 6986352, US 6997188, US 7021311, US 7107989, US 7159587, US 7178527, US 7216647, US 7234466, US 7243651, US 7318439, US 7487777, US 7600513. Other patents pending.

Protected by design registrations: AU 156663, AU 156665, AU 321676, DE 40301991.5, EU 985601, FR 031425, FR 031430, JP 1192859, JP 1197930, JP 1367396, NZ 411222, US D486227, US D487510, US D493521, US D493522, US D545960, US D567935, US D597661. Others pending. Mirage and Activa are trademarks of ResMed Ltd and are registered in U.S. Patent and Trademark Office.

© 2009 ResMed Ltd.

Mirage SoftGel

Protected by patents: AU 741003, AU 766623, AU 775051, AU 777033, AU 785376, DE 20122844.0, EP 1187647, EP 1187649, EP 1187650, EP 1314445, EP 1582230, EP 1621225, EP 1640034, HK 1057714, JP 3686609, JP 4354664, NZ 513052, NZ 526165, NZ 526166, NZ 526167, NZ 526168, NZ 542849, NZ 543939, US 6119693, US 6374826, US 6439230, US 6463931, US 6532961, US 6557556, US 6581594, US 6691708, US 6823865, US 6860269, US 6997188, US 7159587, US 7216647, US 7234466, US 7600513. Other patents pending.

Protected by design registrations: AU 156663, AU 156665, AU 321676, DE 40301991.5, FR 031425, FR 031430, JP 1192859, JP 1197930, NZ 411222, US D486227, US D487510, US D493521, US D493522, US D545960, US D567935. Others pending.

Mirage is a trademark of ResMed Ltd and is registered in U.S. Patent and Trademark Office.

© 2009 ResMed Ltd.



608307/1 09 12
MIRAGE ACTIVA LT
USER
AMER - ENG

