

# RESMED

## Mirage Micro™ for Kids

NASAL MASK

### User Guide

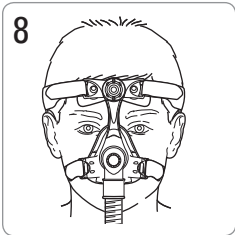
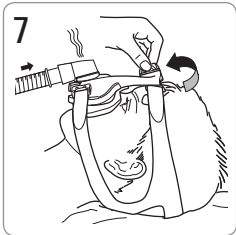
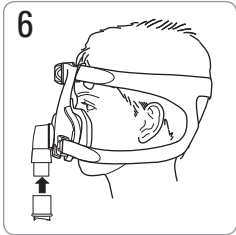
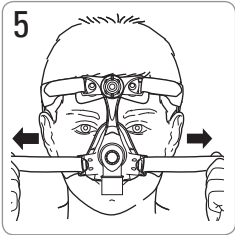
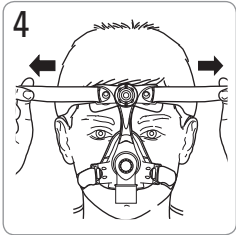
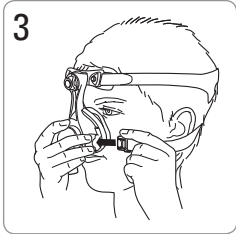
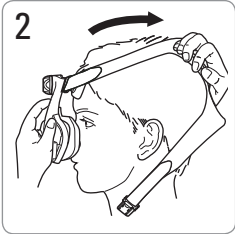
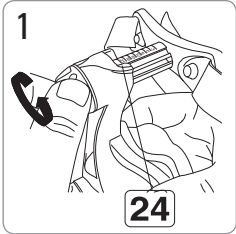
English



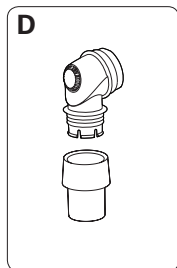
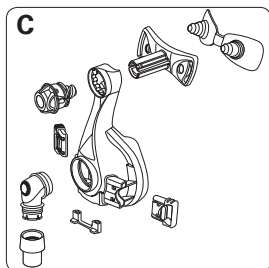
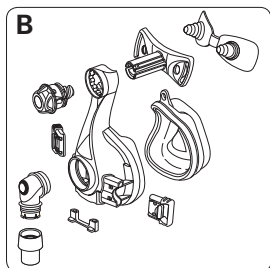
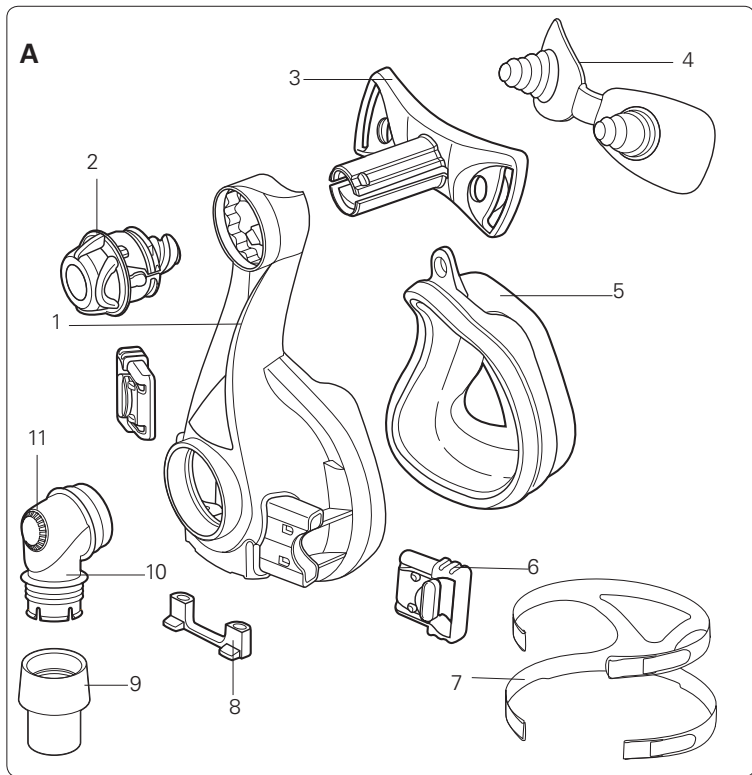
# Mirage Micro™ for Kids

Rx Only

## Fitting / Mise en place / Ajuste / Colocação e ajuste



# Mirage Micro for Kids

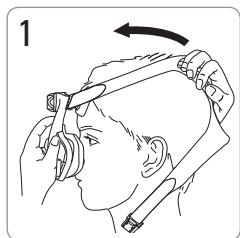


## Mask components / Composants du masque / Piezas de la mascarilla / Componentes da máscara

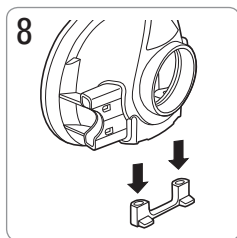
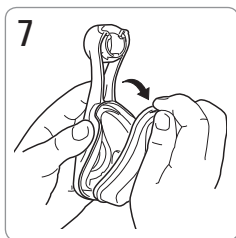
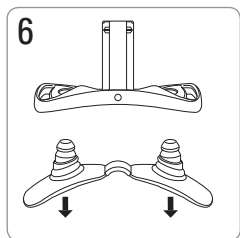
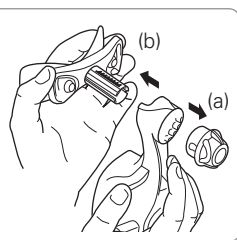
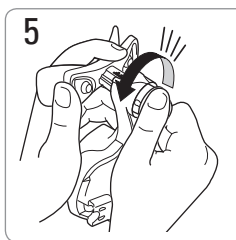
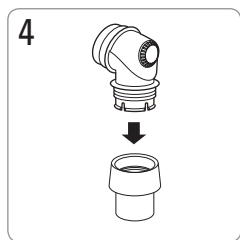
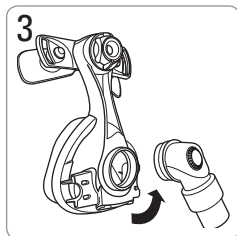
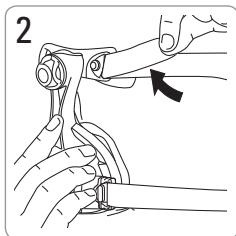
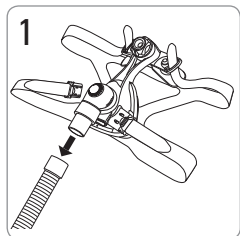
Item / Article / Artículo / Item	Description / Description / Descripción / Descrição	Part number / Code produit / Número de pieza / Código do produto
1	Mask frame / Entourage rigide / Armazón de la mascarilla / Armação da máscara	16395 (S)
2	Dial / Molette de réglage / Disco / Botão giratório	61289
3	Forehead support / Support frontal / Apoyo para la frente / Suporte para a testa	16393
4	Forehead support pad / Tampon frontal / Almohadilla del apoyo para la frente / Almofada do suporte para a testa	60123 (1) 60124 (10)
5	Cushion / Bulle / Almohadilla / Almofada	16388 (S)
6	Headgear clip / Clip d'attache du harnais / Broche del arnés / Presilha do arnés	16569 (2) 16734 (10)
7	Headgear / Harnais / Arnés / Arnês	16118 (S) 16117 (M) 16119 (L)
8	Ports cap / Bouchon d'entrées / Tapón de los puertos / Tampa das portas	16570 (2) 16571 (10)
9	Swivel / Pièce pivotante / Pieza giratoria / Peça giratória	16565
10	Elbow / Coude / Codo / Cotovelo	16387
11	Vent / Orifice de ventilation / Ventilación / Respiradouro	-
A	Complete system / Système complet / Sistema completo / Sistema completo	61013 (S)
B	Frame system / Entourage complet / Sistema del armazón / Sistema da armação	16378 (S)
C	Frame assembly / Ensemble entourage / Montaje del armazón / Conjunto da armação	16383 (S)
D	Elbow assembly / Ensemble coude / Conjunto del codo / Conjunto do cotovelo	16399

S Small / Petit / Pequeña / Pequeno(a),  
M Medium / Moyen / Mediana / Médio(a),  
L Large / Grand / Grande / Grande

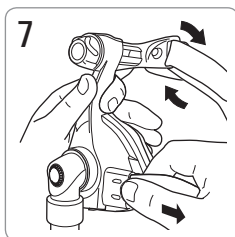
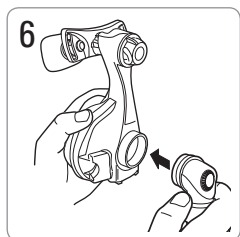
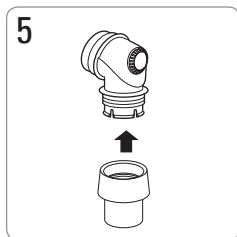
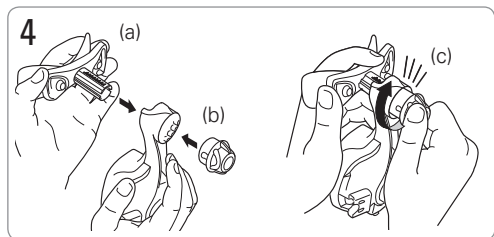
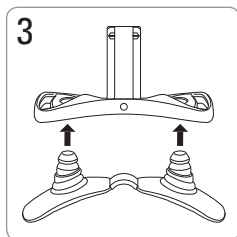
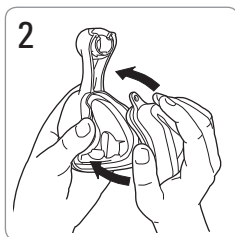
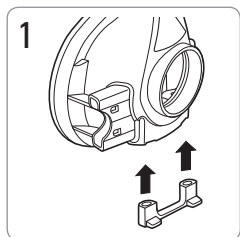
# Removal / Enlèvement / Cómo quitarse la mascarilla / Remoção



## Disassembly / Démontage / Desmontaje / Desmontagem



## Reassembly / Remontage / Montaje / Remontagem



# Mirage Micro™ for Kids

## NASAL MASK

Thank you for choosing the Mirage Micro for Kids.

### Intended use

The Mirage Micro for Kids channels airflow noninvasively to a patient from a positive airway pressure device such as a continuous positive airway pressure (CPAP) or bilevel system.

The Mirage Micro for Kids is:

- to be used by children aged 7 and older, and more than 40 lbs (18.2 kg), for whom positive airway pressure has been prescribed
- intended for single-patient re-use in the home and multipatient re-use in the hospital/institutional environment.



### WARNING

- The mask must be used under qualified supervision for patients who are unable to remove the mask by themselves. The mask may not be suitable for those predisposed to aspiration.
- The mask should be used with CPAP or bilevel devices that allow pressure relief during expiration as recommended by your physician or respiratory therapist.
- If the mask is prescribed for children with serious congenital conditions or cognitive impairments then using a CPAP or bilevel device with appropriate alarms is recommended.
- The vent holes must be kept clear.
- The mask should not be used unless the device is turned on. Once the mask is fitted, ensure the device is blowing air.
- This mask is designed to provide a stable, effective air seal with minimum headgear tension. High headgear tension may lead to facial deformities with long-term use. Regular clinician review of growth patterns and the use of different styles of mask is recommended.
- Ensure that the nasal cushion does not block the nostrils at any time during fitting or use.

- Follow all precautions when using supplemental oxygen.
- Oxygen flow must be turned off when the CPAP or bilevel device is not operating, so that unused oxygen does not accumulate within the device enclosure and create a risk of fire.
- This mask contains small parts that could cause choking. Your clinician should assess the suitability of the mask.
- Remove all packaging before using the mask.

## Using your mask

When using your mask with ResMed CPAP or bilevel devices that have mask setting options, refer to the Technical Specifications section in this user guide for mask selection options.

For a full list of compatible devices for this mask, see the Mask/Device Compatibility List on [www.resmed.com](http://www.resmed.com) on the **Products** page under **Service & Support**. If you do not have internet access, please contact your ResMed representative.

### Notes:

- *SmartStop may not operate effectively when using this mask with some CPAP or bilevel devices that have this feature.*
- *If you experience nasal dryness or irritation, using a humidifier is recommended.*

## Fitting

The Fitting illustrations section in this user guide shows the sequence for obtaining the best fit and comfort when using your mask.

1. Turn the dial, so that the forehead support is fully extended.
2. Hold the mask over your nose and pull the headgear over your head.
3. Bringing the lower straps below your ears, connect the headgear clip to the the mask frame.
4. Unfasten the Velcro®, pull the upper headgear straps evenly until they are comfortable and firm, and reattach the Velcro.
5. Repeat step 4 with the lower headgear straps.
6. Connect the main air tubing to the swivel. Then connect the free end of the air tubing to your device and turn on.
7. Lie down in your sleeping position. Adjust the dial until the mask is evenly positioned on your face. It should be comfortable, with a satisfactory seal. Adjust the headgear straps if necessary.
8. Shows how the fitted mask is positioned.



## Removal

To remove the mask, disconnect one of the lower headgear clips and pull the mask and headgear up over your head.

## Disassembly

Refer also to the disassembly illustrations in this user guide.

1. Detach the air tubing.
2. Unclip the headgear clips and unthread the upper headgear straps. It is not necessary to remove the headgear clips from the headgear.
3. Remove the elbow assembly from the mask frame by pivoting from the bottom edge.
4. Remove the swivel from the elbow.
5. Note the position on the dial for the next time you use the mask. Unscrew and remove the dial (**a**) then pull the forehead support (**b**) out of the mask frame.
6. Remove the forehead support pads from the forehead support.
7. Remove the cushion from the mask frame.
8. Remove the ports cap from the mask frame.

## Reassembly

Refer also to the reassembly illustrations in this user guide.

1. Insert the ports cap.
2. Insert the cushion into the mask frame. Ensure that the arrows at base of the cushion and mask frame are aligned.
3. Push the forehead pads firmly into the forehead support.
4. Insert the forehead support **(a)** into the mask frame and screw **(b)** the dial clockwise onto the pole. Turn the dial until it clicks **(c)**. Ensure the dial sits flush against the frame.
5. Insert the swivel into the end of the elbow.
6. Insert the assembled elbow into the mask frame.
7. Reattach the top headgear straps by threading them through the loops.

## Cleaning your mask in the home

Your mask and headgear should be gently handwashed only.

### Daily/After each use:

- Disassemble the mask components according to the disassembly instructions.
- Thoroughly clean the separated mask components (excluding headgear), by gently rubbing in warm (approximately 86°F/30°C) water using mild soap.
- To optimize the mask seal, facial oils should be removed from the cushion after use.
- Use a soft bristle brush to clean the vent.
- Inspect each component and if required, repeat washing until visually clean.
- Rinse all components well with drinking quality water and allow to air dry out of direct sunlight.
- When all components are dry, reassemble according to the reassembly instructions.

### Weekly:

- Handwash the headgear. It may be washed without being disassembled.

## **WARNING**

- Do not use aromatic-based solutions or scented oils (eg, eucalyptus or essential oils), bleach, alcohol or products that smell strongly (eg, citrus) to clean any of the mask components. Residual vapours from these solutions can be inhaled if not rinsed thoroughly. They may also damage the mask, causing cracks.

## **CAUTION**

- If any visible deterioration of a system component is apparent (cracking, crazing, tears or cushion damage etc), the component should be discarded and replaced.
- Avoid connecting flexible PVC products (eg, PVC tubing) directly to any part of the mask. Flexible PVC contains elements that can be detrimental to the materials of the mask, and may cause the components to crack or break.

## **Reprocessing the mask between patients**

This mask should be reprocessed when used between patients.

Cleaning, disinfection and sterilization instructions are available from the ResMed website, [www.resmed.com/masks/sterilization/americas](http://www.resmed.com/masks/sterilization/americas).

If you do not have internet access, please contact your ResMed representative.

## Troubleshooting

Problem/possible cause	Solution
<b>Mask is uncomfortable</b>	
Headgear straps are too tight.	Adjust straps evenly. The forehead support 'anchors' your mask and should sit firmly on your forehead.
Fit is too tight.	Wind out dial.
<b>Mask is too noisy</b>	
Ports cap or elbow incorrectly inserted.	Remove the ports cap or elbow from the mask, then reassemble according to the instructions.
Vent is blocked or partially blocked.	If the vent requires cleaning, use a soft bristle brush.
Mask is incorrectly assembled.	Disassemble the mask, then reassemble according to the instructions.
<b>Mask leaks around the face</b>	
Mask not positioned correctly.	Gently pull the cushion away from the face to reinflate. Reposition your mask according to the instructions.
Air leaking around the bridge of the nose.	Wind the dial in.
Air leaking around the top of the lip.	Wind the dial out and or tighten the bottom straps.
Mask cushion is misaligned or creased.	Ensure the arrows at the base of the cushion and mask frame are aligned. Ensure the cushion has no creases in it. Undo the headgear clip, check the cushion and reposition the mask over your nose.
<b>The mask does not fit properly</b>	
Cushion and/or mask could be the wrong size.	Talk to your clinician.
Mask is incorrectly assembled.	Disassemble the mask, then reassemble according to the instructions.
Cushion may be dirty.	Clean cushion according to the instructions.
<b>Cannot insert forehead support into mask frame</b>	
The dial has been inserted into the frame before the forehead support.	Push the end of the dial onto a hard surface until the dial comes out of the frame. Reassemble according to the instructions.

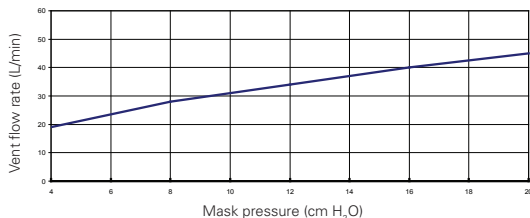
## **WARNING**

- At a fixed rate of supplemental oxygen flow, the inhaled oxygen concentration varies, depending on the pressure settings, patient breathing pattern, mask, point of application and leak rate.
- The technical specifications of the mask are provided for your clinician to check that they are compatible with the CPAP or bilevel device. If used outside specification or if used with incompatible devices, the seal and comfort of the mask may not be effective, optimum therapy may not be achieved, and leak, or variation in the rate of leak, may affect the CPAP or bilevel device function.
- Discontinue using this mask if you have ANY adverse reaction to the use of the mask, and consult your physician or sleep therapist.
- Using a mask may cause tooth, gum or jaw soreness or aggravate an existing dental condition. If symptoms occur, consult your physician or dentist.
- As with all masks, some rebreathing may occur at low CPAP pressures.
- Refer to your CPAP or bilevel device manual for details on settings and operational information.

## Technical specifications

### Pressure-flow curve

The mask contains passive venting to protect against rebreathing. As a result of manufacturing variations, the vent flow rate may vary.



Pressure (cm H <sub>2</sub> O)	Flow (L/min)
4	19
8	28
12	34
16	40
20	45

### Dead space information

Physical dead space is the empty volume of the mask to the end of the swivel. Using the small cushion it is 86 mL.

### Therapy pressure

4 to 20 cm H<sub>2</sub>O

### Resistance

Drop in pressure measured (nominal)  
at 50 L/min: 0.1 cm H<sub>2</sub>O  
at 100 L/min: 0.7 cm H<sub>2</sub>O

### Environmental conditions

#### Temperature

#### Humidity

#### Operating:

+41°F to +104°F  
(+5°C to +40°C)

15% to 95% relative humidity non-condensing

#### Storage and Transport:

-4°F to +140°F  
(-20°C to +60°C)

up to 95% relative humidity non-condensing

### Gross dimensions

#### Small:

Mask fully assembled - no headgear  
5.51" (H) x 3.58" (W) x 3.66" (D)  
(140 mm (H) x 91 mm (W) x 93 mm (D))

### Mask setting options

Select 'STANDARD' as the mask option.

### Notes:

- The mask system does not contain latex, PVC or DEHP materials.
- The manufacturer reserves the right to change these specifications without notice.


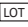









## Storage

Ensure that the mask is thoroughly clean and dry before storing it for any length of time. Store the mask in a dry place out of direct sunlight.

## Disposal

This mask does not contain any hazardous substances and may be disposed of with your normal household refuse.

## Symbols

 Caution, consult accompanying documents;  Lot number;  Part number;  Temperature limitation;  Humidity limitation;  Does not contain latex;  Manufacturer;  Indicates a Warning or Caution and alerts you to a possible injury or explains special measures for the safe and effective use of the device.  Keep away from rain;  This way up;  Fragile, handle with care. **R<sub>x</sub>** Rx Prescription only (In the US, Federal law restricts these devices to sale by or on the order of a physician.)

## Limited warranty

ResMed Ltd (hereafter 'ResMed') warrants that your ResMed mask system (including mask frame, cushion, headgear and tubing) shall be free from defects in material and workmanship from the date of purchase for the period of 90 days or in the case of disposable masks the maximum use period.

This warranty is only available to the initial consumer. It is not transferable.

If the product fails under conditions of normal use, ResMed will repair or replace, at its option, the defective product or any of its components.

This limited warranty does not cover: a) any damage caused as a result of improper use, abuse, modification or alteration of the product; b) repairs carried out by any service organization that has not been expressly authorized by ResMed to perform such repairs; and c) any damage or contamination due to cigarette, pipe, cigar or other smoke.

Warranty is void on product sold, or resold, outside the region of original purchase.

Warranty claims on defective product must be made by the initial consumer at the point of purchase.

This warranty replaces all other expressed or implied warranties, including any implied warranty of merchantability or fitness for a particular purpose. Some regions or states do not allow limitations on how long an implied warranty lasts, so the above limitation may not apply to you.

ResMed shall not be responsible for any incidental or consequential damages claimed to have resulted from the sale, installation or use of any ResMed product. Some regions or states do not allow the exclusion or limitation of incidental or consequential damages, so the above limitation may not apply to you.

This warranty gives you specific legal rights, and you may also have other rights which vary from region to region. For further information on your warranty rights, contact your local ResMed dealer or ResMed office.



**Manufacturer:**

ResMed Ltd 1 Elizabeth Macarthur Drive Bella Vista NSW 2153 Australia.

**Distributed by:**

ResMed Corp 9001 Spectrum Center Boulevard San Diego CA 92123 USA.

ResMed (UK) Ltd 96 Milton Park Abingdon Oxfordshire OX14 4RY UK.

See [www.resmed.com](http://www.resmed.com) for other ResMed locations worldwide.

**Mirage Micro for Kids**

Protected by patents: AU 710733, AU 741003, AU 766623, AU 775051, AU 777033, AU 785376, CA 2261790, CA 2470671, EP 0956069, EP 1187647, EP 1187648, EP 1187649, EP 1187650, EP 1314445, EP 1479406, EP 1582230, EP 1640034, HK 1057714, JP 3686609, JP 4354664, NZ 513052, NZ 526165, NZ 526166, NZ 526167, NZ 526168, NZ 538698, US 6112746, US 6119693, US 6357441, US 6374826, US 6439230, US 6463931, US 6532961, US 6557556, US 6581594, US 6581602, US 6634358, US 6691708, US 6823865, US 6860269, US 6871649, US 6997188, US 7011090, US 7159587, US 7178527, US 7188620, US 7216647, US 7234466, US 7243651, US 7600513, US 7610916. Other patents pending.

Protected by design registrations: AU 304309, AU 319212, AU 319213, AU 319214, AU 319215, AU 319266, AU 319267, AU 319216, AU 319217, AU 319185, AU 319218, AU 320813, AU 320814, CN 200530117106.1, CN 200730331127.2, CN 200730331128.7, CN 200730331130.4, CN 200730331134.2, CN 200730331136.1, CN 200730331137.6, CN 200730331138.0, CN 200830120151.6, EU 366844, EU 823497, EU 940234, EU 959408, EU 970374, JP 1264474, JP 1332693, JP 1332694, JP 1332695, JP 1332696, JP 1332697, JP 1332698, JP 1349614, JP 1350173, JP 1350282, NZ 406357, NZ 410892, NZ 410022, NZ 411316, NZ 411317, NZ 411318, NZ 411319, NZ 411320, NZ 411321, NZ 411322, NZ 411323, US D532512, US D547439, US D545960, US D594111, US D594112, US D594113, US D595840, US D597202. Others pending.

Mirage and Mirage Micro are trademarks of ResMed Ltd and Mirage is registered in U.S. Patent and Trademark Office.

© 2010 ResMed Ltd.

Velcro is a trademark of Velcro Industries B.V

© 2010 ResMed Ltd.



168153/3 10 05

MICRO FOR KIDS

USER

**AMER-ENG**



1 6 8 1 5 3